

Emily N. Brink

Costume Design

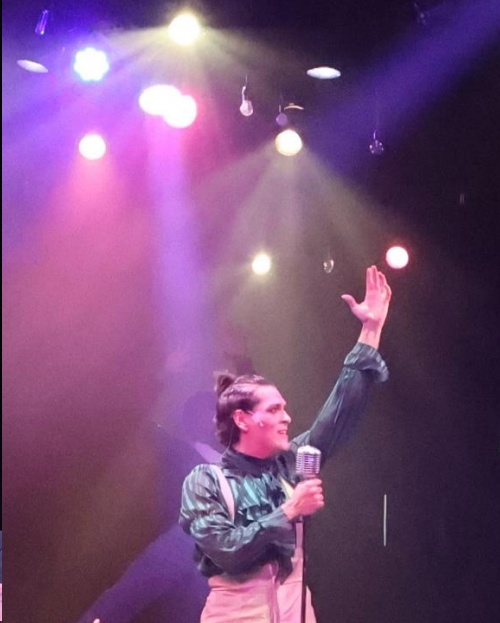
612-655-9043

enbcostumedesign@gmail.com

www.emilynbrink.com

Jesus Christ Superstar

Wagon Wheel Center for the Arts



Photos: Scott Michaels

Jesus Christ Superstar

Wagon Wheel Center for the Arts



The Sound of Music

Wagon Wheel Center for the Arts



Photos: Scott Michaels

The Sound of Music

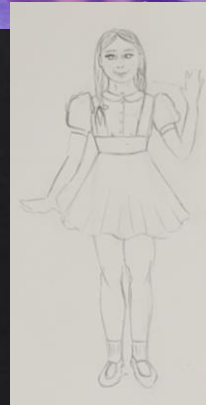
Wagon Wheel Center for the Arts



Photos: Scott Michaels

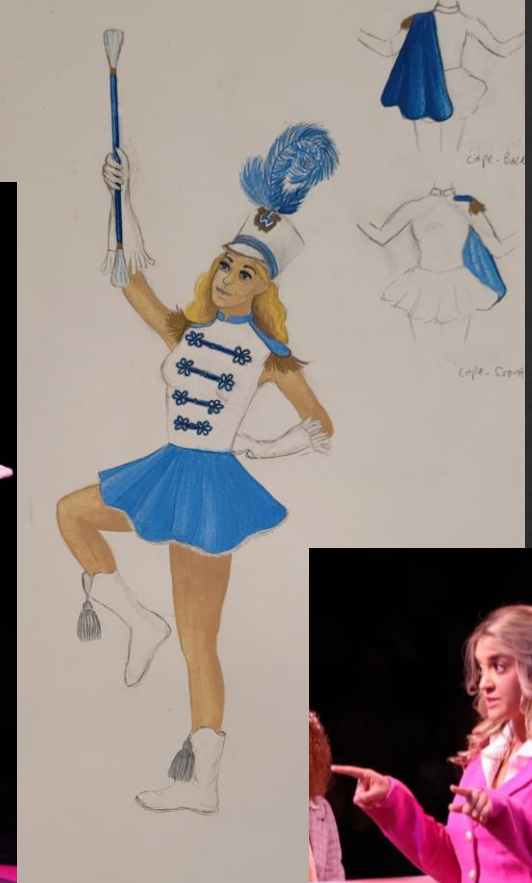
The Sound of Music

Wagon Wheel Center for the Arts



Legally Blonde the Musical

Wagon Wheel Center for the Arts



Photos: Scott Michaels

Legally Blonde the Musical

Wagon Wheel Center for the Arts



Kiss Me, Kate

Cortland Repertory Theatre



Note: A rental package from The Marriott Theatre Lincolnshire was used for some of the "Too Darn Hot" women's looks.

Kiss Me, Kate

Cortland Repertory Theatre



Note: A rental package from The Marriott Theatre Lincolnshire was used for Padua costumes.

Elf the Musical

Wagon Wheel Center for the Arts



Elf the Musical

Wagon Wheel Center for the Arts



The Revolutionists

Oil Lamp Theater



MARIE ANTONETTE
THE REVOLUTIONISTS
EMILY N. BRINK



Saint Sebastian

Refracted Theatre Company



Saint Sebastian

Refracted Theatre Company



Photos: Evan Hanover

The Mass

UNC School of the Arts



The Mass
Celebrant
Look 1



The Mass
Celebrant
Look 2



The Mass
Celebrant
Look 3



The Mass
Celebrant
Look 4



The Mass
Children's Chorus Boys
Look 1



The Mass
Children's Chorus Girls
Look 1



The Mass

UNC School of the Arts



The Mass
Liturgical Choir



The Mass
Liturgical Choir



The Mass
Liturgical Choir



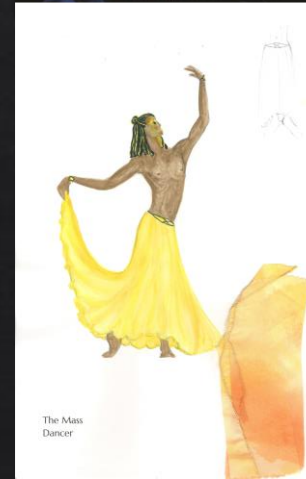
The Mass
Liturgical Choir



The Mass
Liturgical Choir



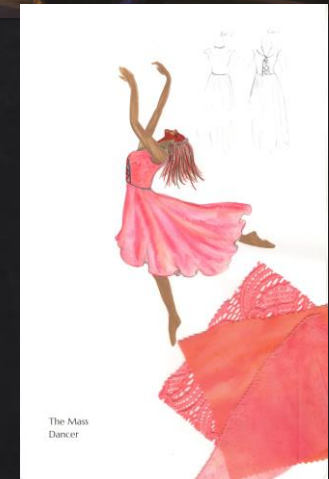
The Mass
Liturgical Choir



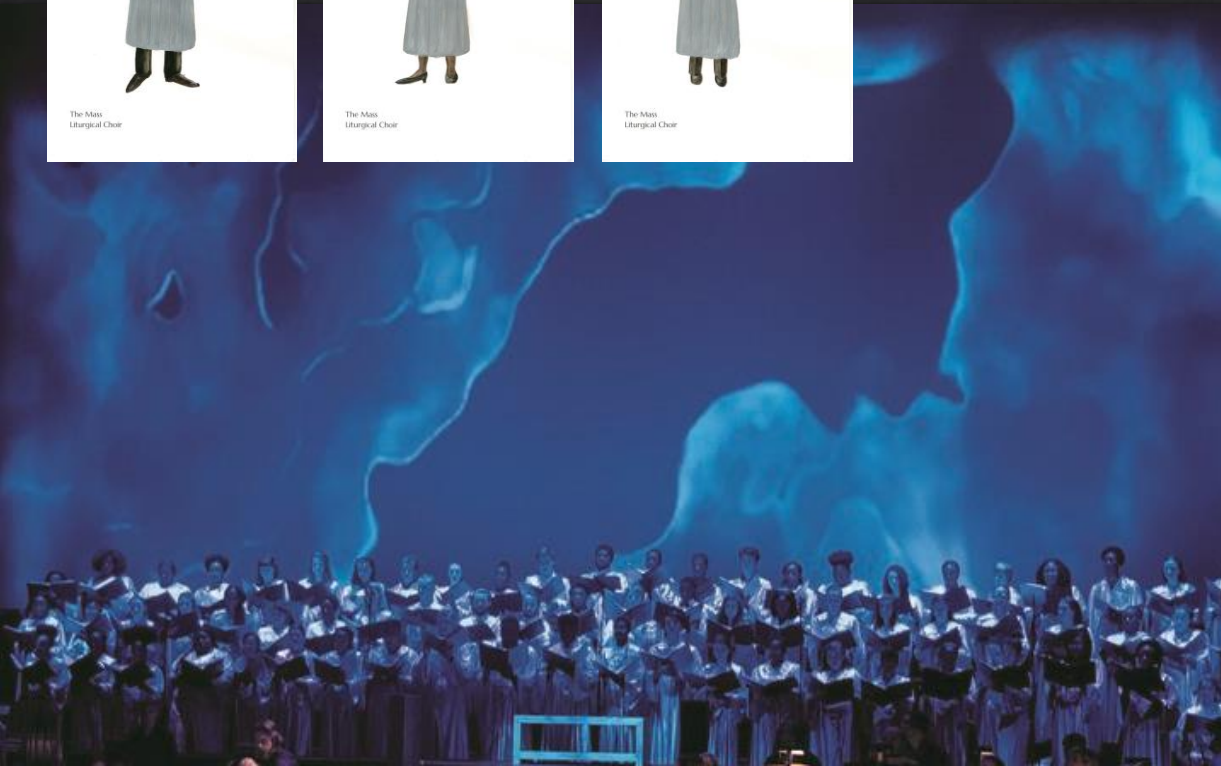
The Mass
Dancer



The Mass
Dancer



The Mass
Dancer

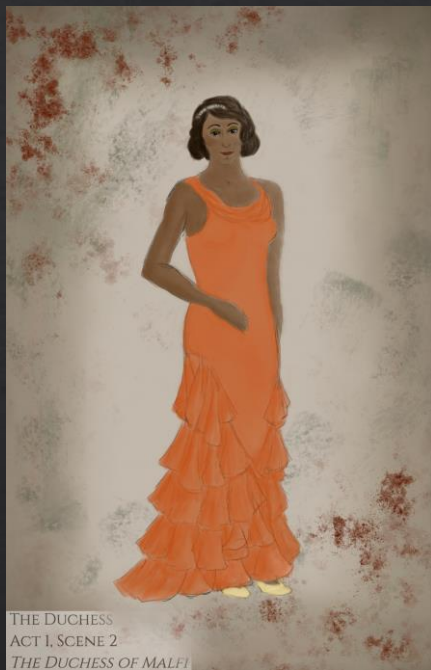


The Duchess of Malfi

UNC School of the Arts



THE DUCHESS
ACT I, SCENE 1
THE DUCHESS OF MALFI



THE DUCHESS
ACT I, SCENE 2
THE DUCHESS OF MALFI



THE DUCHESS
ACT I, SCENE 3
THE DUCHESS OF MALFI



THE DUCHESS
ACT I, SCENE 8
THE DUCHESS OF MALFI



THE DUCHESS
ACT I, SCENE 9
THE DUCHESS OF MALFI



THE DUCHESS
ACT I, SCENE 11
THE DUCHESS OF MALFI



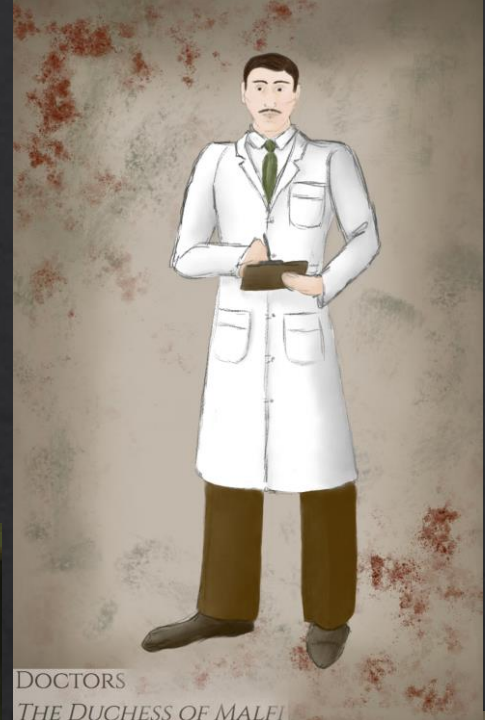
THE DUCHESS
ACT 2, SCENE 1
THE DUCHESS OF MALFI



THE DUCHESS
ACT 2, SCENE 5
THE DUCHESS OF MALFI

The Duchess of Malfi

UNC School of the Arts



DOCTORS
THE DUCHESS OF MALFI



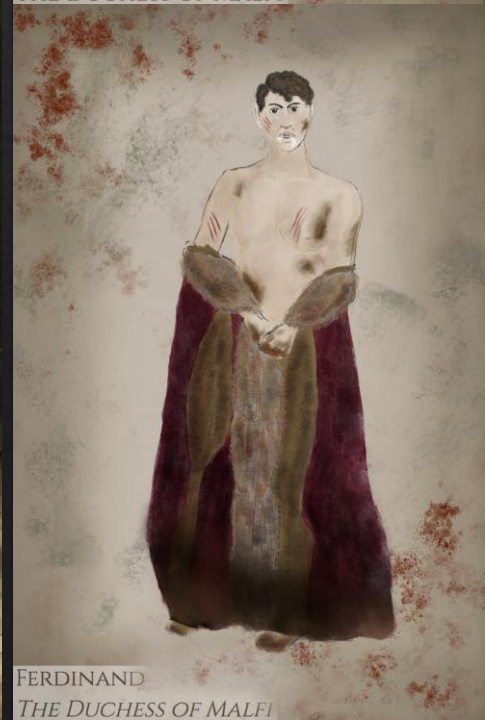
CHORUS OF MADMEN
THE DUCHESS OF MALFI



JULIA
THE DUCHESS OF MALFI



CHORUS OF MADMEN
THE DUCHESS OF MALFI



FERDINAND
THE DUCHESS OF MALFI

Juliet
Romeo & Juliet



Romeo & Juliet

North Carolina Symphony Orchestra

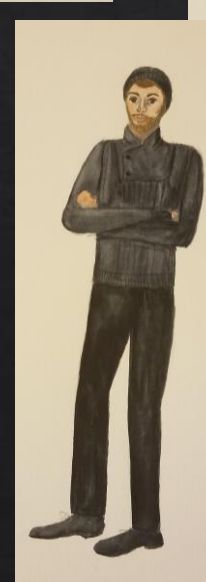
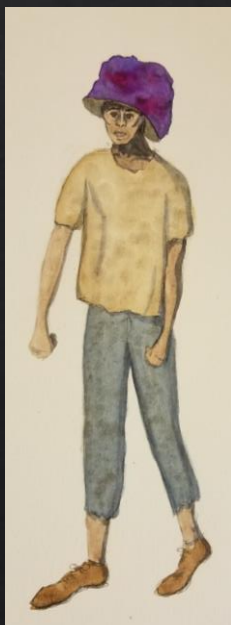
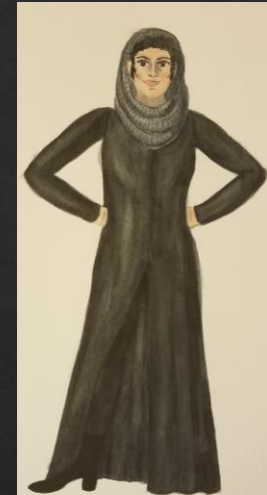
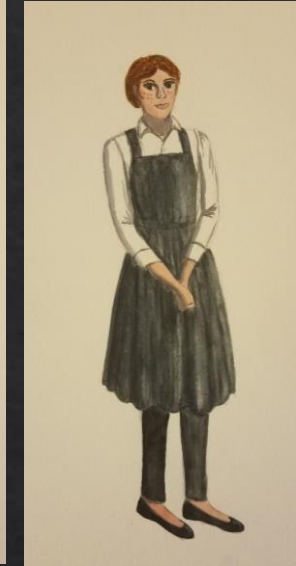


Romeo
Romeo & Juliet



Far Away

Hangar Theatre Company





Ajax

Hangar Theatre Company



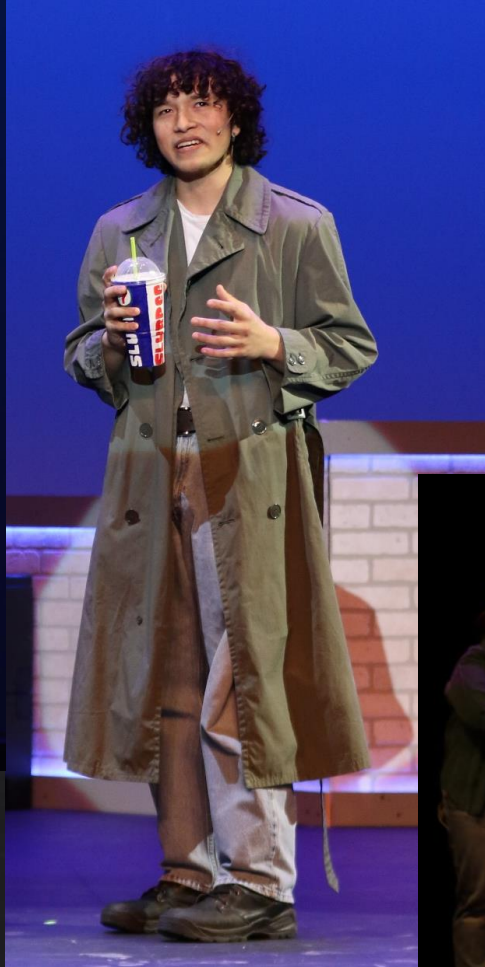
Heathers the Musical

Larkin High School



Heathers the Musical

Larkin High School

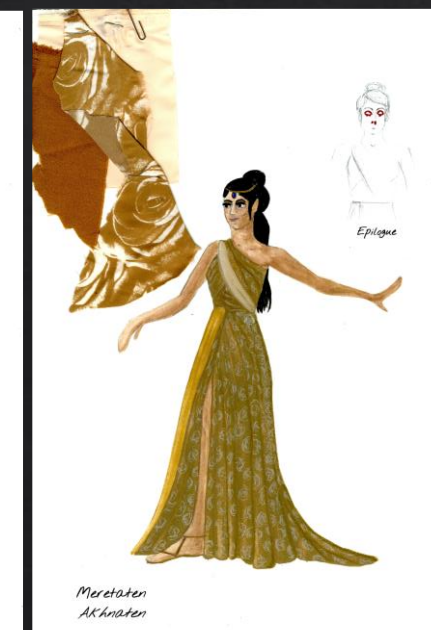
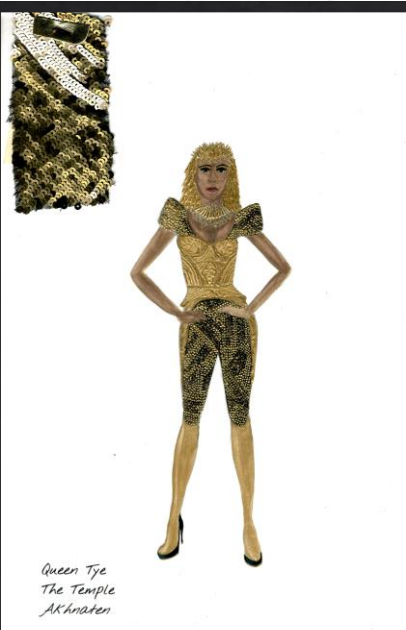
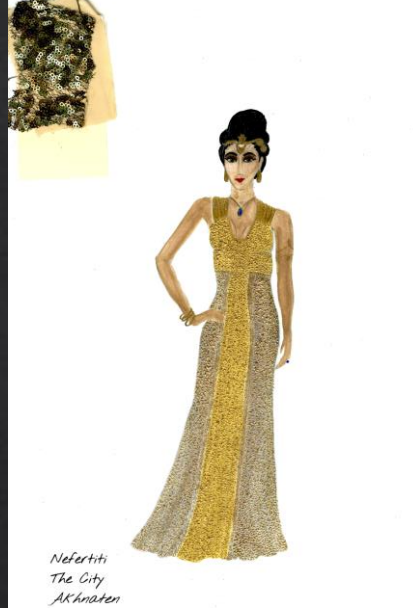
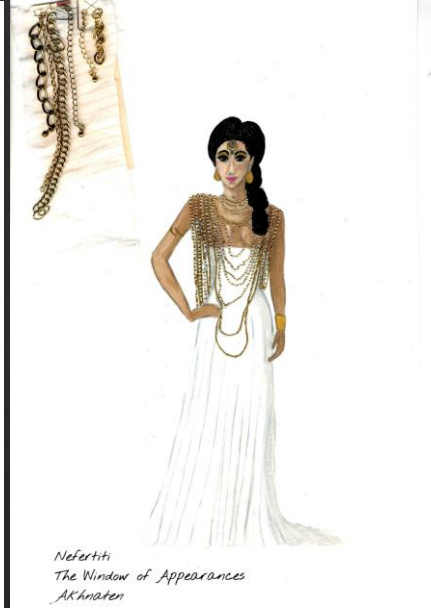
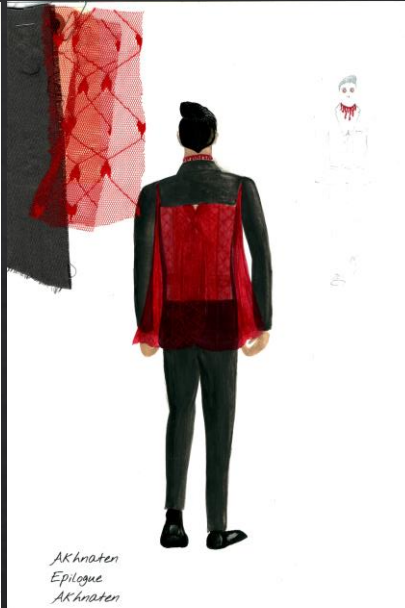


Hair

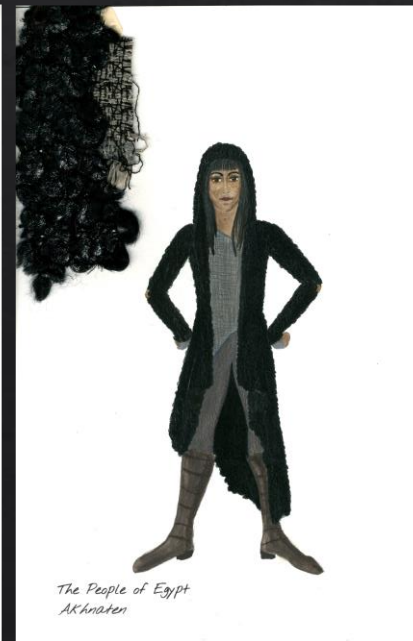
The Minneapolis Children's Theatre Company



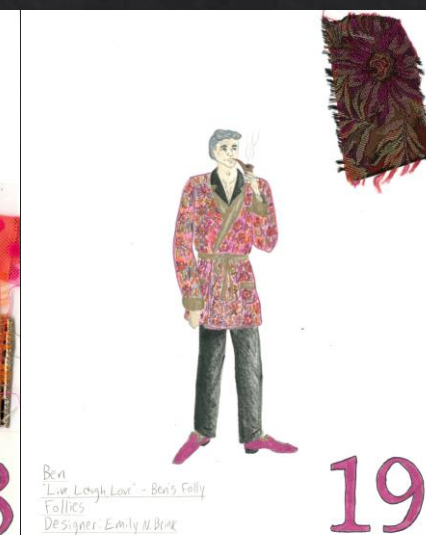
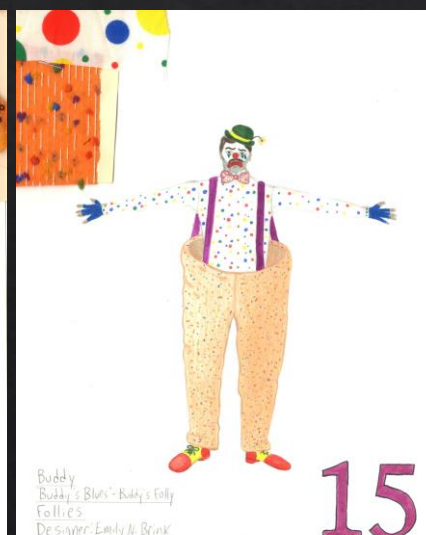
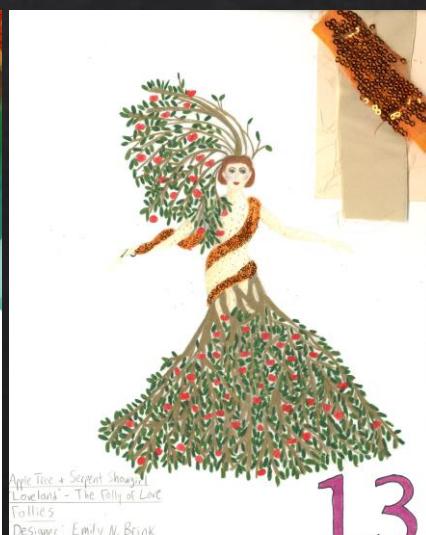
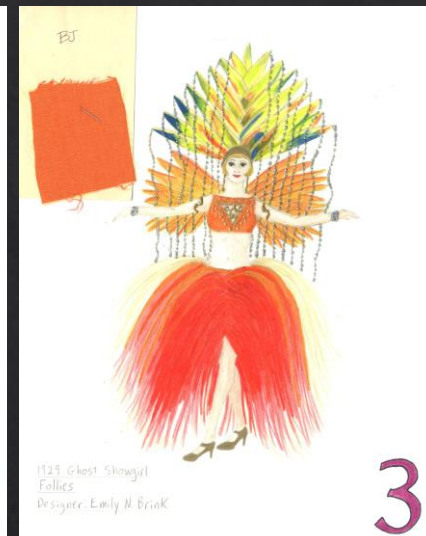
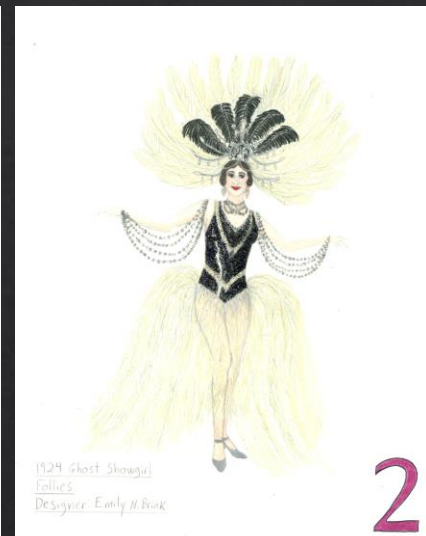
Akhnaten (Theoretical)



Akhnaten (Theoretical)



Follies (Theoretical)



The Confectionary Circus (Theoretical)



Pastry Chef
The Confectionary Circus
Designer: Emily N. Brink

1



Ringmaster
The Confectionary Circus
Designer: Emily N. Brink

3



Female Stiltwalker
The Confectionary Circus
Designer: Emily N. Brink

5



Woman Leading Camel
The Confectionary Circus
Designer: Emily N. Brink

6



Camel With Blanket
The Confectionary Circus
Designer: Emily N. Brink

7



Silk Aerialists
The Confectionary Circus
Designer: Emily N. Brink



Tightrope Walker
The Confectionary Circus
Designer: Emily N. Brink

11



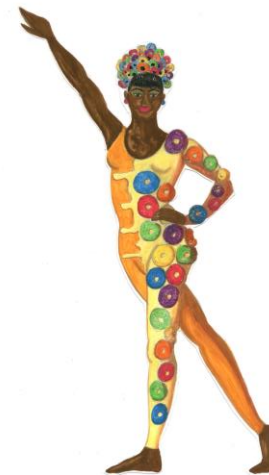
Pie Clown
The Confectionary Circus
Designer: Emily N. Brink

12



Pie Clown
The Confectionary Circus
Designer: Emily N. Brink

13



Donut Acrobat
The Confectionary Circus
Designer: Emily N. Brink

15

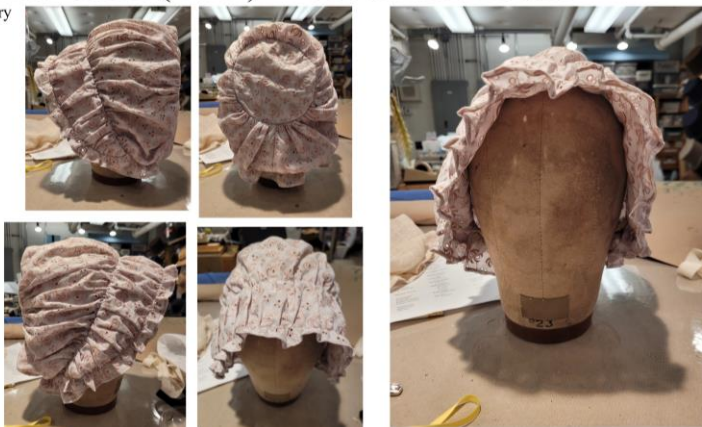


Donut Acrobat
The Confectionary Circus
Designer: Emily N. Brink

18

A Christmas Carol (2021) – Goodman Theatre

Dyework & Millinery

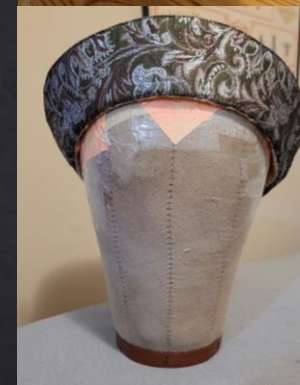


A Christmas Carol (2021) – Goodman Theatre

Millinery



Millinery



King's Blade (TV Pilot)
Mock-up to Fashion Fabric



Photos: Peter J. Mueller

Fabric Modification

Balm in Gilead

Aging/Distressing



Fabric Dyeing - Werther

Fabric Before Dye



Fabric After Dye



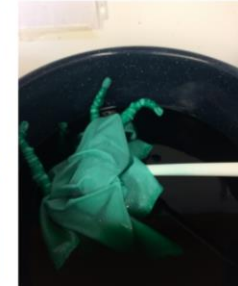
Photo: Peter J. Mueller

Distressing – Fairytale Lives of Russian Girls



Shibori – Fab Mod Class

Cotton



Silk



Puppet-Making & Foam Sculpture

Brooklyn Bridge – DePaul Theatre School

Foam Sculpture/Costume Crafts

